

TRUCK BACKER®

INSTALLATION MANUAL



PO Box 356, Highland, CA, 92346
909-793-7574
www.truckbacker.com

Revised - 01/14
185-0062 R1

THIS DOCUMENT IS NOT THE USER'S MANUAL

WARNING!

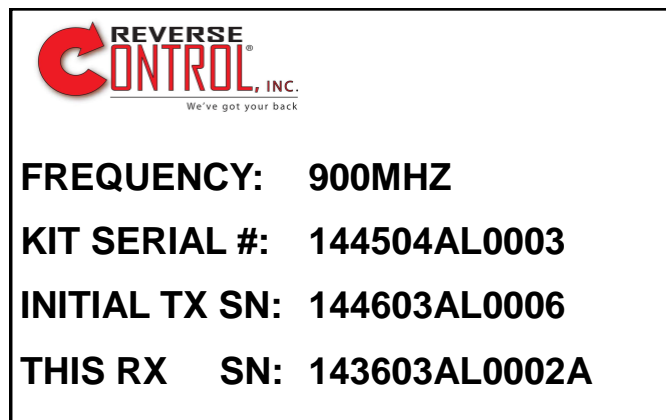
Operating the TruckBacker® System correctly is an important responsibility for the safety of the user and the safety of others. Therefore it is critical that individuals read the USER'S MANUAL before using this product. The USER'S MANUAL is intended to help the individual make informed decisions about safety, and alert to potential hazards.

Operating the TruckBacker® System requires a complete understanding of the product to use it properly. Failure to follow the instructions and safety warnings contained in the USER'S MANUAL may result in property damage, severe injury or death.

Of course it is not possible to warn about all the hazards associated with operating this product and the user must exercise good judgment at all times. Never rely solely on the TruckBacker® System and always look behind you before backing any vehicle.

NOTE: Cut the label off the outside of the box and keep the information for registering the product serial numbers and activation of the warranty.

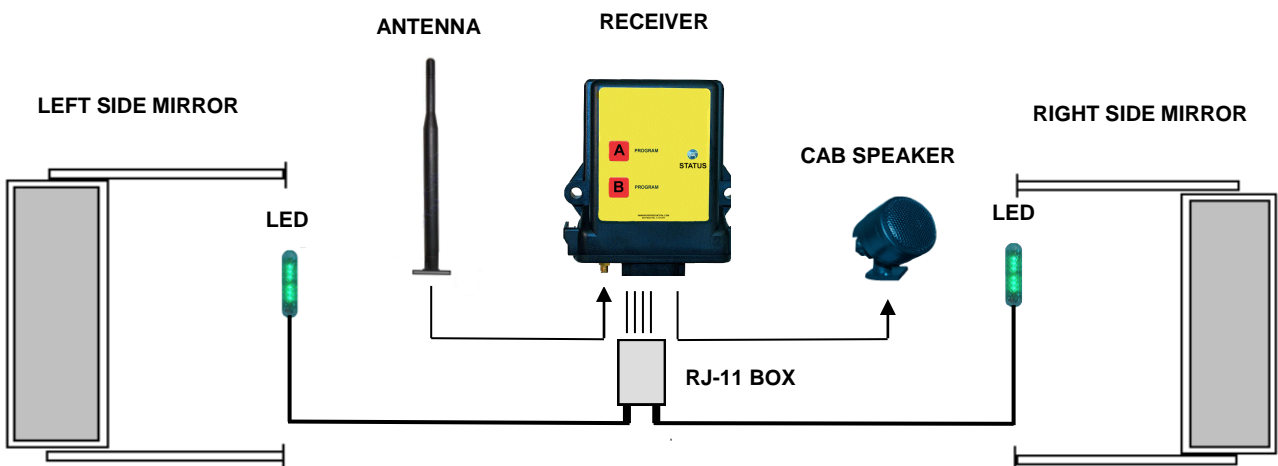
LABEL EXAMPLE



REQUIREMENTS AND CAUTIONS PRIOR TO INSTALLATION

- Installation should only be completed by a certified automotive mechanic or radio technician.
- Always use caution when making electrical connections. Make sure to:
****DISCONNECT THE BATTERY PRIOR TO INSTALLATION ****
- Use caution when drilling holes for mounting. Prior to drilling, make sure that the location of the hole will not damage or interfere with the vehicles existing wiring or components.

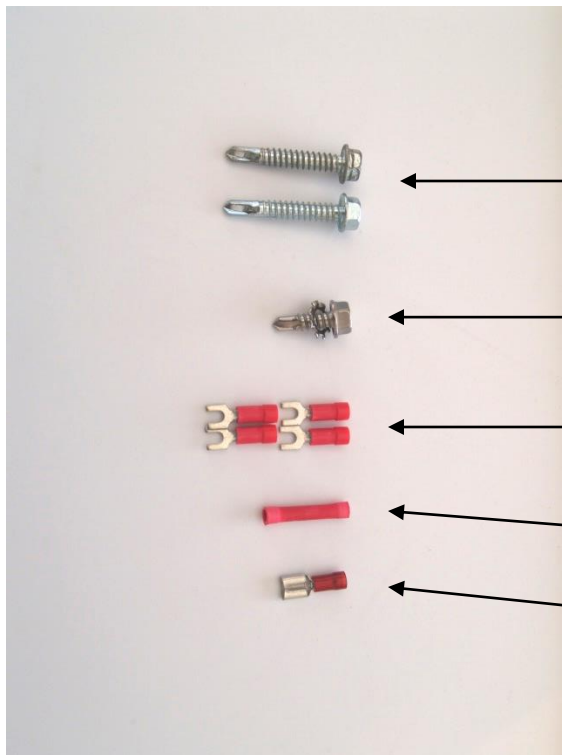
VEHICLE COMPONENTS



HANDHELD TRANSMITTER



12 SOCKET CABLE ASSEMBLY



Self tapping Receiver Mounting
Screws

Self Tapping Chassis Ground Screw

Crimp Connectors for RJ-12 Box

Speaker Power Butt Connector

Crimp Connector for Receiver
Power Supply

STEP 1 - MOUNTING THE RECEIVER

Determine a suitable location for the Receiver that will not obstruct or interfere with the operation of the vehicle. Keep in mind the need for a 5 amp fused power supply, a clean ground, Antenna mounting, Speaker location and LEDs, all of which will connect by wiring back to the Receiver. Careful advance consideration of the wiring paths for each component will simplify installation. Make sure to spot the Receiver in a location where the “A and B PROGRAM” buttons can be accessed.

IMPORTANT! - Use the same grounding point that the Radios and Intercom system use to avoid “Ground-loop” Noise in the Intercom system.



STEP 2 - MOUNTING THE ANTENNA

Determine location for the roof Antenna and mount with hardware included. A mounting diagram is included inside the Antenna package. The Antenna uses a standard NMO style mount. Keep in mind, 12 feet of antenna cable is provided when determining the location. The antenna mount is an adjustable mount that will compensate for various thicknesses of metal it must pass through. Pay close attention to the small mounting diagram included with the antenna. If the antenna mount is not adjusted correctly for the thickness of the metal roof, there is a potential for the antenna to not be effective. This will cause greatly diminished range of the system.

IMPORTANT NOTE:

If the antenna location terminates through “Diamond Plate” on the roof, it may be necessary to grind down a flat area for the exterior trim gasket to create a weather seal.



STEP 3 - MOUNTING THE SPEAKER

The Speaker must mount in a location where it can be clearly heard from the driver's seat. The preferable location is in the upper area of the cab, reasonably close to the driver's seat. Aim the speaker toward the driver for optimal ability to hear the signal tones.

Determine an appropriate location for the Speaker and mount with hardware included. The Speaker kit has mounting bracket options including a pedestal style mount, as well as surface plate mounting hardware.



STEP 4 - MOUNTING THE RJ-11 BOX

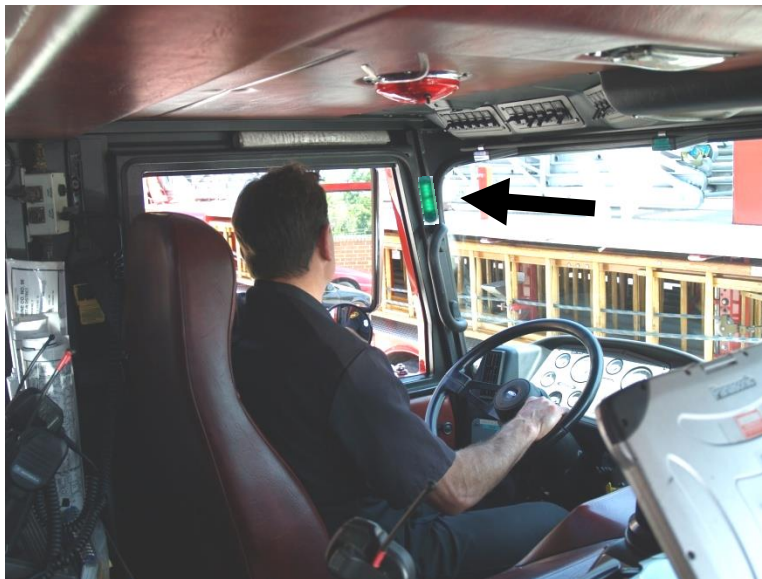
Establish a location for the RJ-11 Box. Consider that the two LED cables coming from the right and left sides of the cab will connect to this box. It may be advantageous to mount this under the dash, or it may be better near the Receiver. Also keep in mind the standard 12 foot cable lengths provided in the kit will play a factor in determining the location. Mount the RJ-11 Box in the appropriate location.



STEP 5 - MOUNTING THE LEDs

Determine location for the LED light bars. Location should be in the field of vision of the driver while he or she is looking at either the right or left mirror. In most cases, the right and left "A" posts work well for placement of the LEDs and running the wiring back to the Receiver.

Clean the surface where the LED light bars will be mounted. Peel back the cover of the double stick tape on the back of LED light bars and adhere to the established location.



STEP 6 - RUN / SECURE / HIDE THE WIRING

Run the wiring and cables for the system as follows:

- Run the Antenna Cable to the Receiver. Coil excess cable, secure and connect to the Receiver.
- Plug the 12 Socket Cable Assembly into the Receiver.

STEP 6 - RUN / SECURE / HIDE THE WIRING (continued)

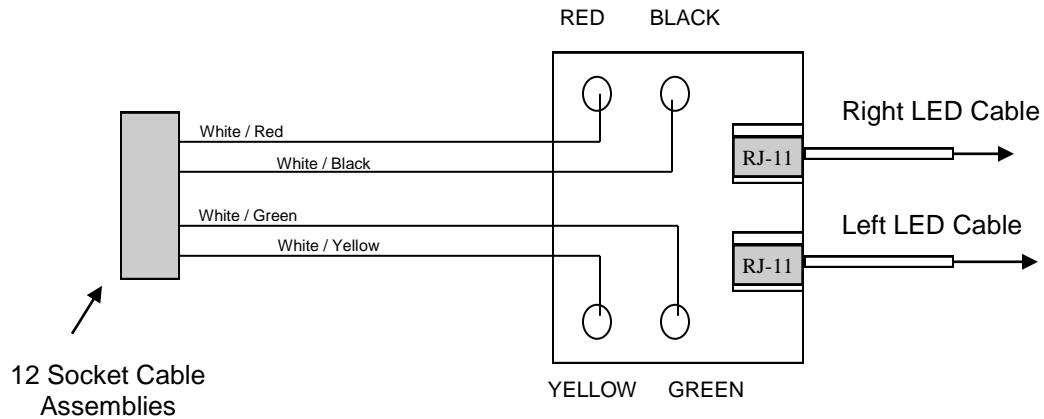
- The Receiver requires connection to a 5 amp fused power supply that is activated by the vehicle's ignition switch. Find the appropriate power source and ground location for the Receiver. The ground is best taken from a "clean" source such as the one used for the two way radio system.
- With the ignition switch in the OFF position, refer to the "WIRING CHART" and the "RJ-11 BOX SCHEMATIC" below and make the respective connections.

WIRING CHART

CABLE ASSEMBLY	PURPOSE	DEVICE WIRE	DEVICE
RED	RECEIVER POWER	5 AMP FUSED	VEHICLE IGNITION
BLACK	RECEIVER GROUND	INTERCOM GROUND	INTERCOM GROUND
	SPEAKER GROUND	BLACK	SPEAKER
BROWN	SPEAKER POWER	BROWN	SPEAKER
WHITE / YELLOW	RJ-11 BOX	TWO GREY PHONE CABLES WITH RJ-11 CONNECTORS	RIGHT AND LEFT SIDE LEDS
WHITE / RED			
WHITE / GREEN			
WHITE / BLACK			
YELLOW	BASE / GROUND	---	INTERCOM
GREEN	RING / MIC	---	INTERCOM
BLUE	TIP / HEADSET	---	INTERCOM

NOTE: Intercom connections should only be completed by a certified radio technician.

RJ-11 BOX SCHEMATIC



STEP 7 – TEST THE SYSTEM

- Reconnect the vehicle's battery supply. The transmitter batteries (2 "C" cells) should already have been installed in the transmitter at the factory.
- With ignition OFF there should be no power to the Receiver. Turn the ignition ON. When the system receives power, a 3 second audible tone will sound and the LED light bars will illuminate FLASHING RED simultaneously for 3 seconds, then go dark. The TruckBacker® System is now ready for operation.
- With the TruckBacker® Transmitter in hand, press and hold the button down. This should activate 3 short, high pitched audible tones. At the same time the LED light bars should illuminate GREEN, and remain GREEN as long as the button on the Transmitter is depressed.
- Release the button on the Handheld Transmitter and the system will sound a 3 second, low pitched audible tone and the LED light bars will illuminate FLASHING RED simultaneously for 3 seconds, then go off.
- NOTE: With the system working properly take the TruckBacker Handheld Transmitter and test the range of the system by walking around behind the equipment its installed on 50' to 100' to make sure there is no signal loss. Signal loss most likely indicates a problem with the antenna system installation.
- READ AND UNDERSTAND THE USER'S MANUAL BEFORE USING THE TRUCKBACKER® SYSTEM.

SECTION 8 - VEHICLE AND TRANSMITTER LABELING

The RECEIVER mounted on the vehicle and its respective TRANSMITTER have been “paired” at the factory. It is critical, therefore, that all vehicles equipped with the TruckBacker® System be labeled in the rear exterior. The label must have a distinctive identification number, letter or symbol. The identification must be large enough to be visible from locations and distances a Spotter would normally encounter.

Large highly visible identification numbers are inherent, for example, to most fire apparatus. General industry trucks and vehicles that are equipped with the TruckBacker® System must be labeled, in the rear, in a similar fashion.

The respective TRANSMITTER must be labeled to match the vehicle’s exterior identification. This will allow the Spotter to visualize that the vehicles identification matches the TRANSMITTER being used.

See Example:

